

Specification

BX-Y08A controller

Version : V1.2 Release date : 2021.4.2

CATALOG

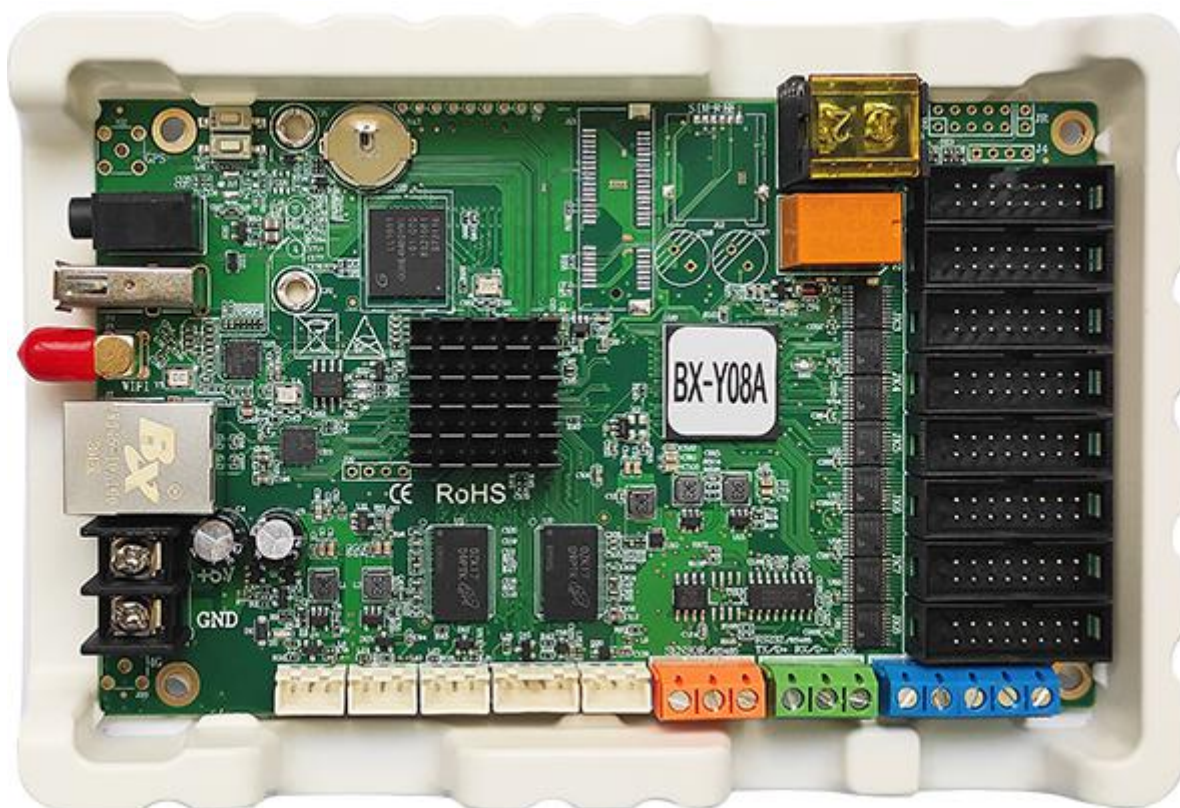
Guiding.....	2
Safety Notes.....	2
Product photos.....	3
Feature.....	4
Function instruction.....	5
Control area.....	5
Support high refresh.....	5
Multiple communication mode.....	5
Large storage capacity.....	5
Support Traffic Guiding Screen.....	5
GPS is Optional.....	5
Selecting Program by 4 bit IO.....	6
ON/OFF Remotely Port.....	6
Abundant 3D stunt.....	6
Support database.....	6
Support Mobile App.....	6
Flexible program release methods.....	6
Support many sensors.....	7
Support remote control.....	7
Timer switch screen.....	7
Second Development.....	7
Technical specifications.....	7
Dimension diagram.....	8
Interface diagram.....	9

Guiding

Safety Notes

- ◆ Input voltage is 5V, voltage range is from 3.3V-6V, please make sure the quality of the power supply of BX-Y series.
- ◆ Please make sure that all the power supply cables are plugged off when you want to connect or plug off any signal or controlling cables.
- ◆ Please make sure that all the power supply cables and signal cables are plugged off when you need to put in or take off the hardware equipment.
- ◆ Please make sure the environment is clean, dry and ventilated when you use this product, also, do not put this product to a high temperature and wet environment.
- ◆ This product is electronic products, please keep away from fire, water source and flammable&combustible products.
- ◆ There's high pressure components in this products, please do not open the box and repair it by yourself.
- ◆ Turn off the power supply immediately when you find smoking, peculiar smell or something unusual. And contact with us soon.

Product photos



Feature

- ◆ Suitable for intelligent light pole screen and traffic screen, and its technical index is equivalent to BX-Y08A
- ◆ Multiple communication modes: on-board 100M Ethernet port+RS232+RS485+USB, standard with WIFI, 4G is optional
- ◆ Support broadcast function with Chinese and English.
- ◆ Support selecting program by 4 IO.
- ◆ Support group controlling, group sending program.
- ◆ Support updating firmware online.
- ◆ On-board RS232/485 communication port, support brightness sensor, temperature sensor, temperature and humidity sensor, noise sensor, air quality sensor, wind direction and win speed sensor, etc.
- ◆ Support IR controller as to select program, adjust brightness, volume, screen testing, etc.
- ◆ Support mobile APP.
- ◆ UV three-protection glue for all types, national standard 85 protection level, dust prevention, damp proof, anti-static, salt-spray proof;
- ◆ -40 °C ~ 80 °C, 3.5v-5.5v wide voltage, 7 * 24 hours power-on, fault rate ≤ 0.3%

Function instruction

Control area

BX-Y08A on board 8 nos T75 port, Total 128K pixels, the maximum width 1024, the maximum height 512., used for medium size full color screen and cluster control. Widely used in Led posters and Led pole screens bus screen, etc.

Support high refresh

BX-Y series of controller support high refreshment (here refers to the receiving card for LED screen refresh, users scan) or mobile phone camera shooting picture from time to time, no distortion, no scanning line, the true nature and excellent results.

Multiple communication mode

The controller is on board a 100M network interface, internal integrated 4G wireless module, WIFI module, also supports USB interface, external WIFI module. Built-in WIFI both as a hot spot (AP), but also as a terminal. Supports external 4G routers.

For the general network topology, users can use the network cable directly access the router or switch, and management PC communication.

For short-range wireless applications, the user can open the controller built-in WIFI, access to their own routers, to achieve online control management. Users can also open the controller's WIFI hot spots, access to their own PC controller, to achieve management control. For the controller hot spots, the user can set the password, the rights management.

Large storage capacity

BX-Y08A, built in 4G storage for high resolution video. And support extending to 256GB.

Support Traffic Guiding Screen

Support general traffic protocol, for many kinds of traffic guiding screen projects.

GPS is Optional

GPS function is optional, you can use for vehicle-mounted screen. Controller connects with GPS antenna, log in iLEDCloud, then you can edit program remotely, preview, play

program at the fixed time, fixed place, also you can lock the screen location in iLEDCloud satellite map page when controller obtain location signal.

Selecting Program by 4 bit IO

Selecting program by outside IO is to choose program by outside signal, as to display different programs by different signal.

ON/OFF Remotely Port

Connect relay module with controller, as to control ON/OFF of air condition, fan, power supply of screen, etc.

Abundant 3D stunt

Support graphic text, subtitles, video, lunar calendar, dial, timing, temperature, humidity, announcements, weather forecasts areas. Text areas can be pictures or text, supporting a wealth of special effects, including curtain, pan, laser, mosaic, shutter and other common effects. Controller built-in GPU (graphics processing unit), support Abundant 3D stunt and FLASH subtitle.

Support database

The controller will support database area, supports multi-page display, supports MYSQL, SQL server and other format database in the near future.

Support Mobile App

Y series supports management by mobile APP. APP software is very easy to understand and operate. Users can edit, send data by mobile phone, pad. APP supports searching screen, supports multi languages, supports dynamic preview, video transcoding function. Supports zoom in and out manually.

Flexible program release methods

Users can use PC software LedshowYQ to add ,edit , preview, release. If network is not convenient, users can also use U-disk to import programs or plug-in and display.

Online update firmware

BX-Y series support remote upgrade firmware, users can use PC software LedshowYQ, iLEDCloud platform to upgrade the latest firmware, to enhance controller functionality, performance, solve bugs. The controller has built-in logging function, it can record various

important events, and support remote consult, analyze and solve the fault.

Support many sensors

On-board temperature, humidity, brightness ports & RS485 port for many kinds of environmental sensors. It can measure and display temperature, humidity, brightness, noise, PM2.5, PM10, wind direction, wind speed, etc.

Support remote control

BX-Y08A supports remote control, very easy to switch programs by the remote .and also the screen brightness, volume, turn on and off screen, testing etc. user experience comparable to TV remote control, especially suitable for indoor led screen management.

Timer switch screen

The LedshowYQ software support timing switch screen. After setting the turn on and turn off time, the computer will turn on the machine on time and automatically. It can make use of manpower and material resources reasonably, and greatly improve the service life and reliability of the display screen. When the user is inconvenient to operate on the side of the computer, this function can better realize.

Second Development

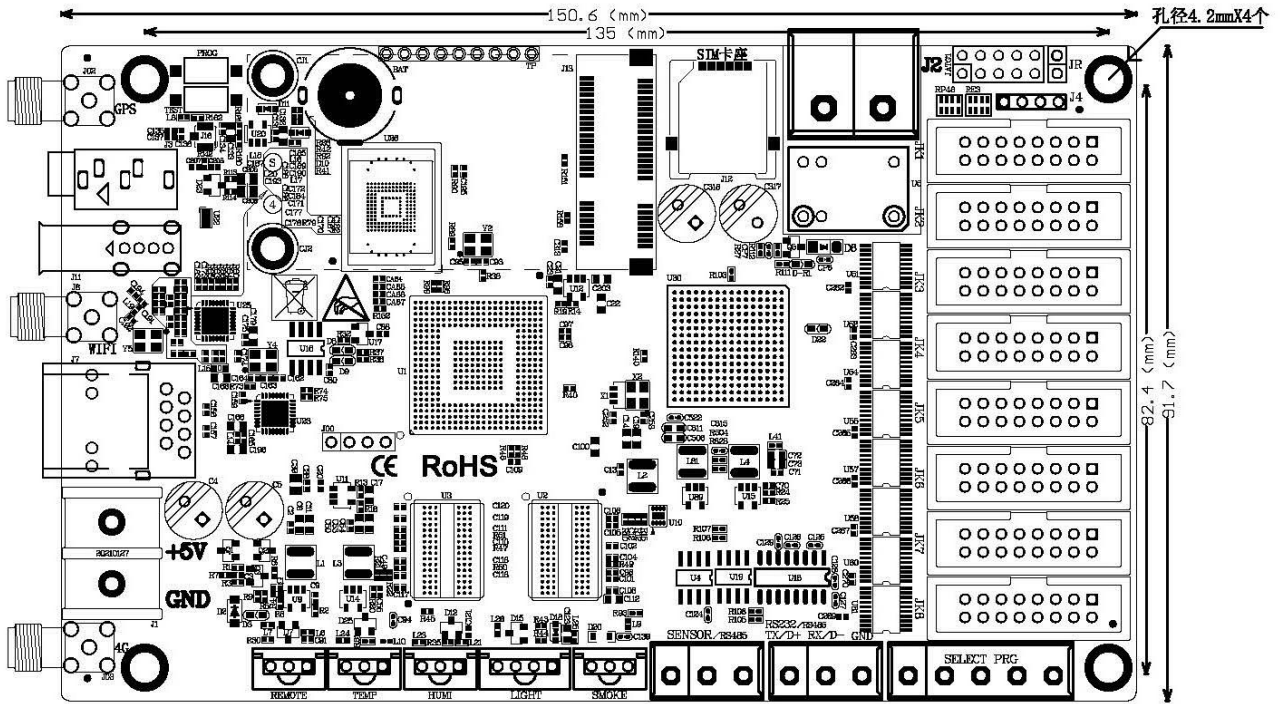
Support dynamic area, offer C#, JAVA, VB, C++ developing tool. Support C++ development on Linux system, we opened communication protocol, and support http protocol, users do second development for our controller according to your requirement as to realize some special functions

Technical specifications

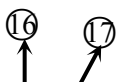
Screen index

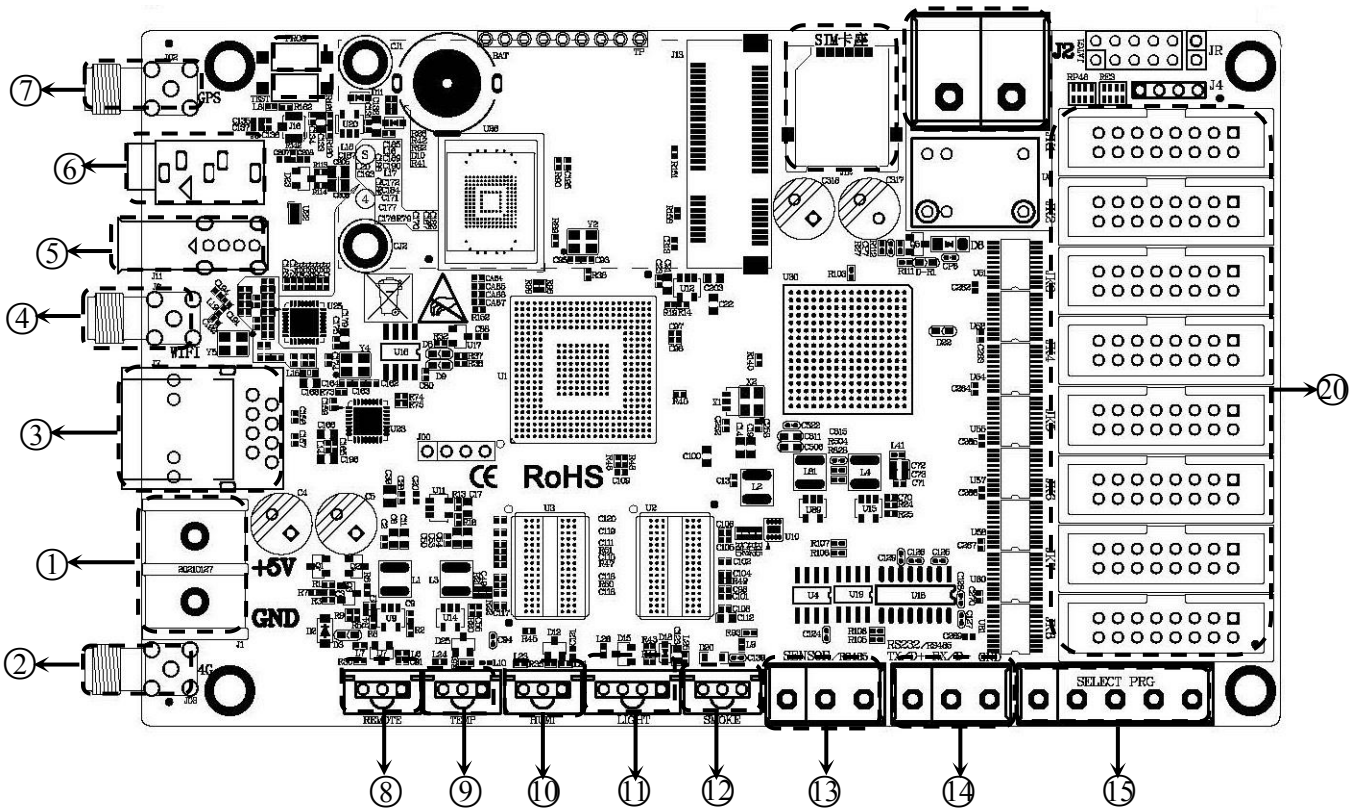
Parameter	Specification
Specification	64 × 64
Minimum size	512×256
Maximum width	1024
Maximum Height	512

Dimension diagram



Interface diagram





Key instruction		
1	5V	5V Power interface, DC voltage input,voltage 5V, support(3.5V ~ 5.5V)
2	antenna	Connect 4G (optional)
3	100M	Ethernet interface, Fast Ethernet, connected to the computer
4	antenna	Connect WIFI
5	USB	USB port ,Connect with USB disk ,external WIFI module
6	AUDIO	AUDIO OUTPUT
7	antenna	Connect GPS (optional)
8	IR	IR controller interface
9	TEMP	Temperature sensor interface
10	HUMI	HUMI/TEMP sensor interface
11	LIGHT	Brightness sensor interface
12	SMOKE	Smoke sensor interface
13	RS485	RS485 communication port, for environmental sensor
14	RS485/ RS232	RS232/RS485 communication port,Standard RS485.RS232 is optional
15	Select program	Connect with outside control IO
16	PROG	Program switch button

17	TEST	Test button
18	SIM card set	SIMcard set (optional)
19	SWITCH	Switch interface
20	75 interface	T75 interface (JK1、JK2、JK3、JK4、JK5、JK6、JK7、JK8)

Shanghai ONBON Technology Inc.

Address: 7 Floor, Tower 88, 1199#, North Qinzhou Road,
Xuhui District, Shanghai City, China

Website: www.onbonbx.com

ONBON (Jiangsu) Optoelectronic Industrial Co.,LTD

Address: 1299#, Fuchun Jiang Road, Kunshan City,
Jiangsu Province, China